

Filling water in the kangoo

HOLINGER SOLAR AG

Wattwerkstr.1, 4416 Bubendorf

☎ 061 923 93 93

Fax 061 921 07 69

www.holinger-solar.ch

1- Launching the maintenance charge

Preferably battery must be below 40% energy before launching the maintenance charge.

Connect the NXR:

- press ON/OFF button
- select Menu
- Scroll to "*Renault vehicle fault finding*" and press valid [*]
- Scroll to *Kangoo* and press valid [*]
- Scroll to *Supervisor* and press valid [*]
- Select *Command*
- Scroll to *Erase* and press valid [*]
- Scroll to *RZ003 maintenance charge request* and press valid [*]
- Turn the key to Ignition on
- Select *Next*
- NxR should return a OK
- Connect the charging cable to the net.

Maintenance charge will overcharge the battery with 30Ah at a rate of 5A, this means the maintenance charge will last 6 hours more after the battery is fully charged. At the end of the maintenance charge, warning of the car will blink for 10 minutes, you have to get ready to fill the water.

Important: Water must be filled within 15 minutes after the end of the maintenance charge

Note: You can monitor how long time is remaining to the end of the maintenance charge using the embedded kangoo diag dashboard display. For that, before connecting the NxR, enter the diag menu and go to **CHArGE** menu and stay there. Connect the NxR and after having set the maintenance charge, connect the charging cable. The **CHArGE** menu will first indicate **PHASE 1** untill the battery is fully charged and then it will switch to **PHASE 2** meaning battery overcharging. At that point, the parameter **CHArGE / AhS**, will first indicate 30 and then will count down to 0 at a rate of 5 Ah per hour. This is a very convenient way to know how long time is remaining untill the water filling must occur.

2- Filling water

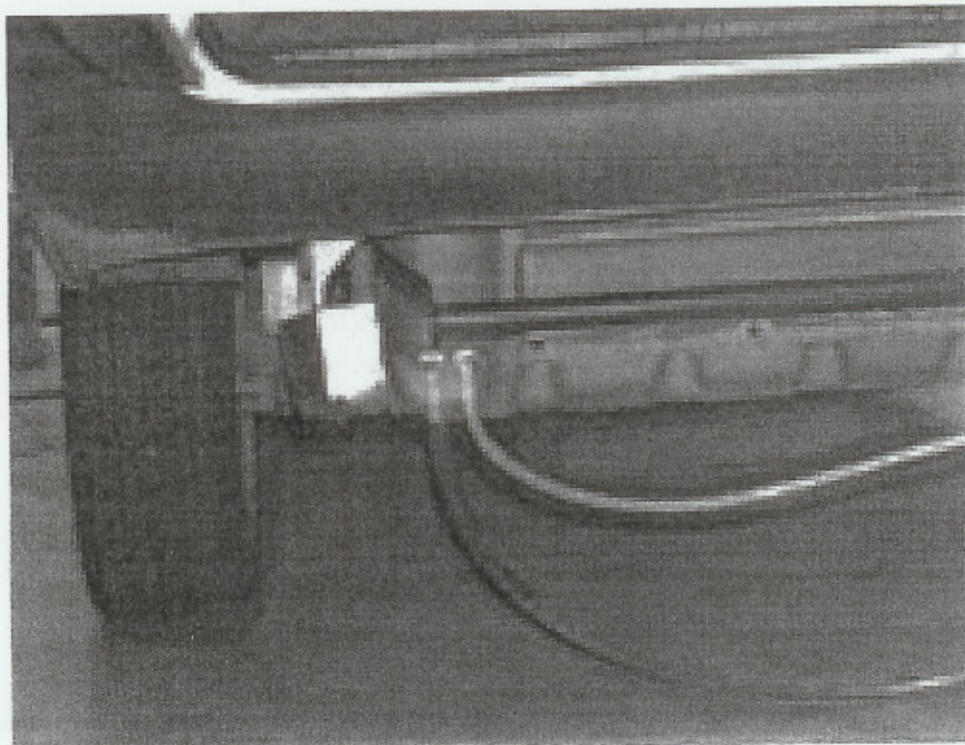
Very important : use deionised water with conductivity <30uS/cm

Up to 20 liters may be necessary.

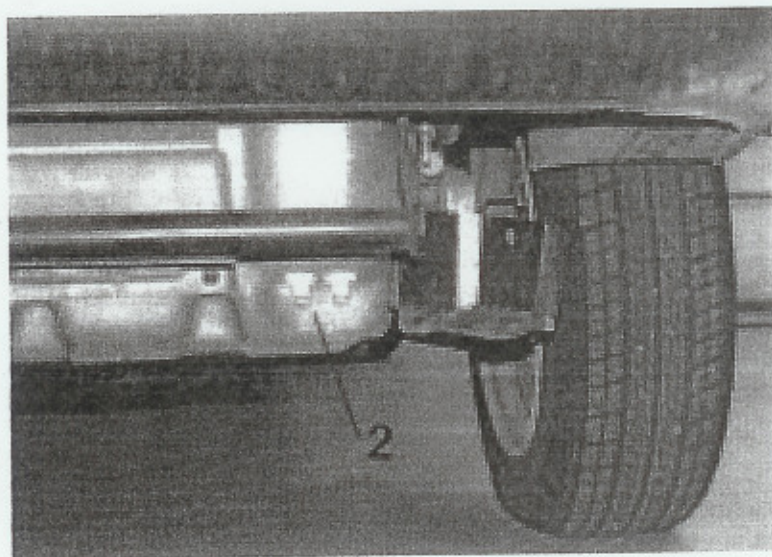
There are 3 circuits to fill. Each circuit has 2 connectors. You have to fill up from one end until water comes out from the other end. Inlet and outlet does not matter. It is not necessary

to use a pump, rather use a tube long enough so that you can fill from 1.50 meter high , water will fill battery by gravity.

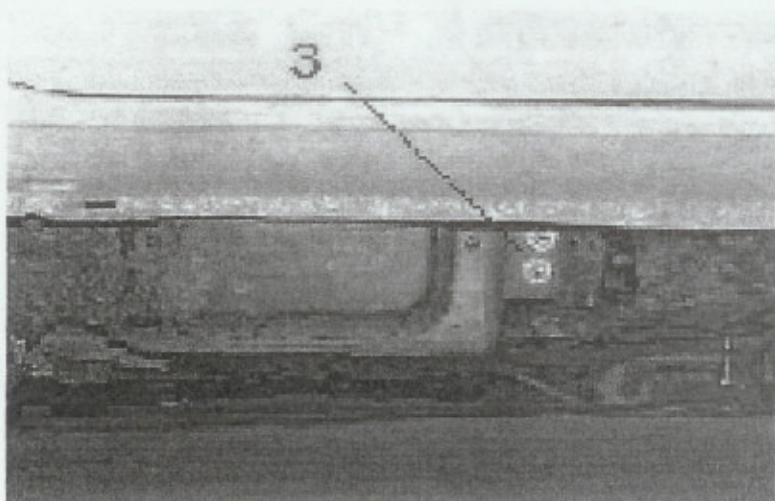
A: Start with left rear connectors



B: continue to right rear connectors



C: Finish with right side connectors



To access the right side connectors you have to remove a plastic cover located under the car at the level of the right sliding door.

3- Erasing “Filling water” lamp on the dashboard

Connect the NxR tool. Go to menu Kangoo / Superviseur / Commande / Effacement, select command **RZ001** « réinitialisation remplissage batterie », then press « valid ».